

Pathein, Myanmar

The proposed City Deal takes an **'anti-silo' and inclusive, multi-stakeholder approach** to addressing the challenges of **urban poor in flood-prone areas** around the creeks and canals in Pathein. The effects of annual flooding of these low-lying wards with poor inhabitants and many informal settlers are severe due to poor housing, inadequate services and waste collection and blocked sewers. The intention is to address this challenge in an integrated manner in one or more **area-based pilots** with strong involvement of the **local community**; to **mobilise different government departments** around the various issues facing such a neighbourhood and to **build TDAO's capacity for coordinated interventions**.

Project activities

- Technical assistance
- Training and coaching on multi-stakeholder cooperation
- Training and coaching on communication and public awareness for inclusive waste management
- Basic governance capacity development on water and waste management
- Technical advice to promote gender mainstreaming throughout the project
- Facilitation and support for pilot projects
- Support to develop and implement multi-stakeholder pilot projects on water and waste management
- Facilitate citizen engagement and awareness for sustainability

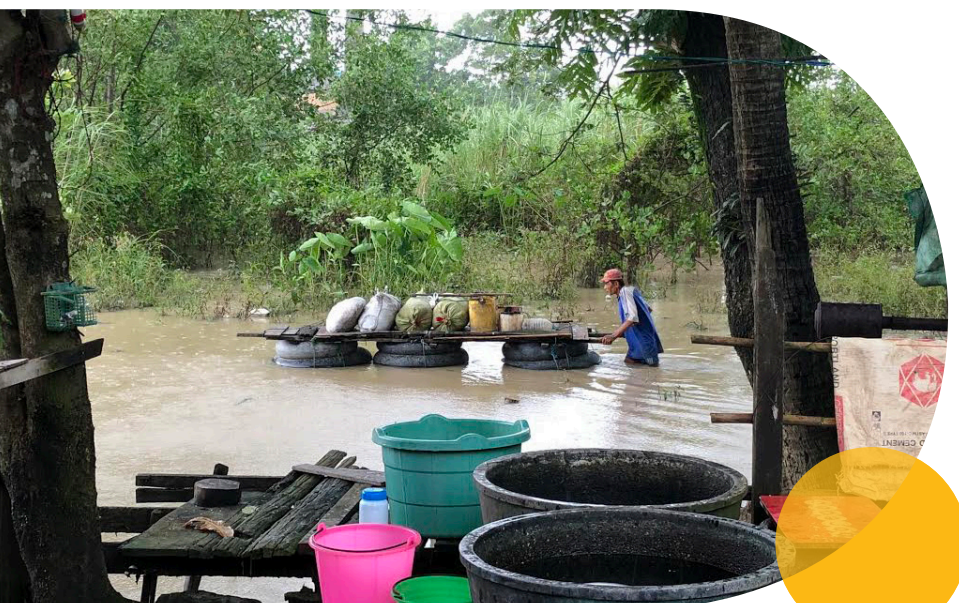
[see other side »](#)

Context

Pathein is Myanmar's 6th largest city. Situated in the heart of the fertile Ayeyarwaddy Delta, it is a corridor city with a fast growing population, estimated at 380.000 (census 2014). Pathein township is the most urban township in Ayeyarwaddy Region, hosting the seat of the Region Government, the biggest Development Affairs Office, several offices of Union Ministries and a finely meshed governmental-administrative network in the 15 wards.

Among the factors contributing to spatial (land use, housing), environmental (flooding, waste), social (gender inequality) and economic (informality) problems is the expansion of squatter settlement associated with urbanisation in Pathein. In general, it is residential areas in an urban locality inhabited by the poor who have no access to tenured land of their own. They have settled on currently vacant land like beside the railroads, around and above the creeks, small streams and gutters and also the backside of the central dumping ground. In Pathein, inclusivity and sustainability of settlements around the creeks, small streams and gutters should be collectively addressed by different stakeholders on the initiative of Pathein Township.

The key challenges and priorities for urban issues in Pathein listed by the Ayeyarwaddy Region Government, the Region DAO, Township DAO, and Township DAC are flooding/ drainage and garbage management. This does closely match those emphasized by CSO's.



- Facilitation of multi-stakeholder meetings
- Facilitation and support for integrated cooperation on sustainability (cooperation with different departments)
- Learning and exchange
- Study visit to the Netherlands (2018)
- Domestic study visit
- On-demand city-to-city learning

Results

Improved environmental management for and by people living in (squatter) settlements in flood-prone areas in urbanising Pathein.

Involved parties

- *Governmental:* Decentralised Pathein Township, Development Affairs Organisation (TDAO), Ayeyarwaddy Regional Government, Ward Administrators, Union ministries and their agencies in Pathein, i.a., Ministry of Construction - Department of Urban and housing development, Ministry of Transport - Directorate of water resources and improvement of river systems, Ministry of Social Welfare, Relief and Resettlement - Department of social welfare (gender focal point), Ministry of Home Affairs - General Administration Department (GAD), Pathein University
- *Non-governmental:* The programme pursues active coordination of the public sector with other actors through a multi-stakeholder partnership with: civil society organisations and private sector The programme will align its activities with other donors (The Asia Foundation, JICA, UN Habitat, Dutch Embassy)



“This is our workshop and thank you for your participation”

Naw Htee Ku Paw, DEALS coordinator: “The ward selection workshop was held on the 28th of December. 69 participants actively joined the workshop. They represented the Pathein Township Development Affairs Committee (TDAC), Ayeyarwaddy Region Development Affairs organization, Pathein University, Pathein township ward administrators, ward cleaning and supporting groups, Myanmar engineering group, community based organization (CBOs), media and member of the parliament. The participants discussed and dropping and adding criteria so they would be relevant to the context. Six criteria were determined to select two pilot wards. Namely: 1) flooding situation 2) waste situation 3) ratio of poor families 4) involvement of suitable CSOs to work with 5) active and interested Ward Cleaning and Support Group 6) capability of TDAC to work with selected ward. Five groups were randomly separated and discussed which two wards out of the 15 should be selected. The groups selected ward 12 and ward 7. The participants indicated to enjoy the democratic, transparent and unbiased manner of selection. The TDAC Chairman closed the workshop and he said: ‘this is our workshop and thank you all for your active participation and welcome for future collaboration.’”

